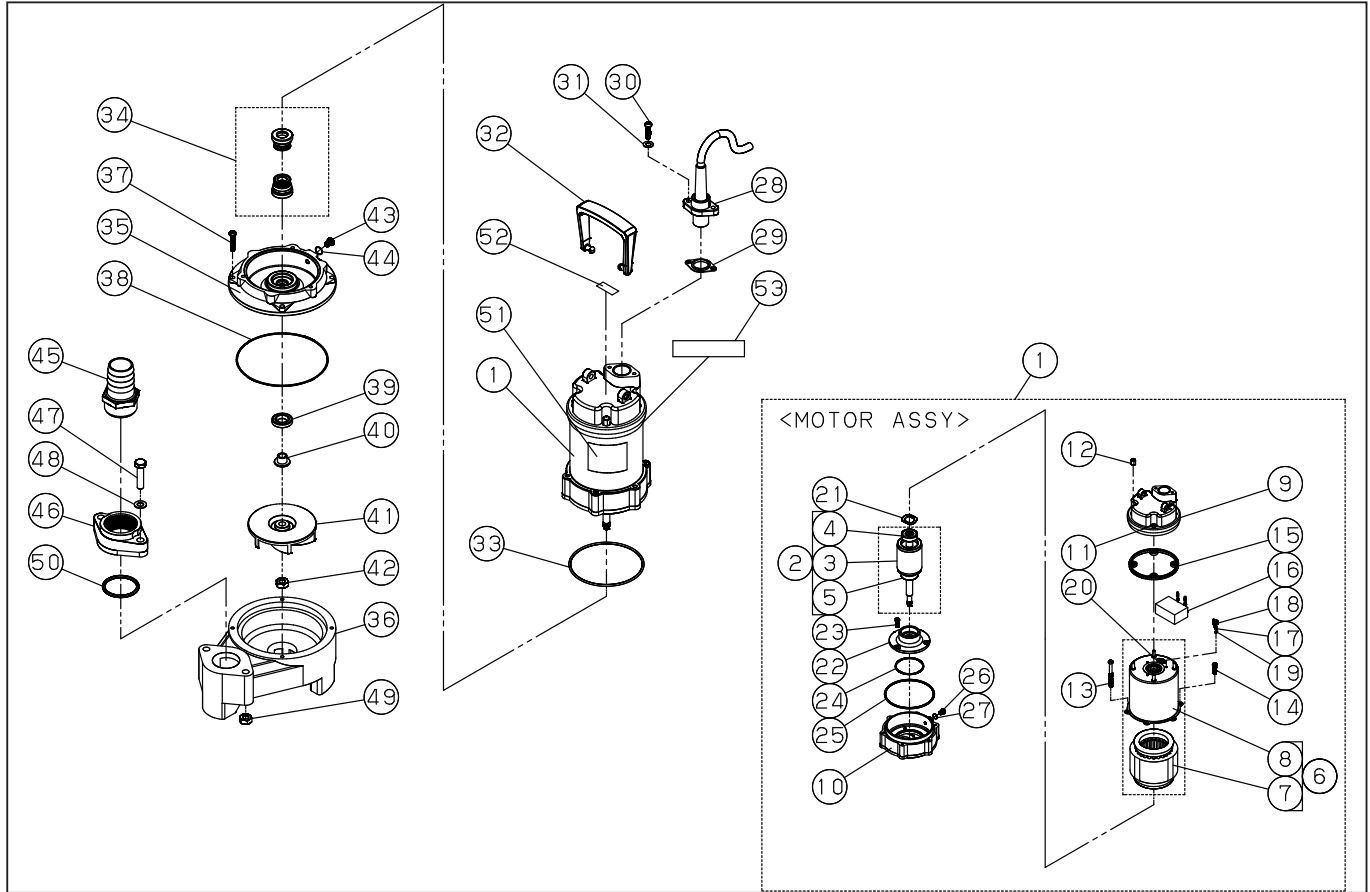


DWG No.077850501 MODELE : PKJ-150 FORM : PKJ-150-BAB-0

No.	PARTS CODE	PARTS NAME	QTY	MATERIAL/SIZE	REMARKS
1	0778014	MOTOR ASSY	1		
2	0778016	ROTOR ASSY	1		
3	0770124	ROTOR	1	SUS	
4	0770125	BEARING	1	6200LLB	
5	0770123	BEARING	1	6201LLB	
6	0778015	STATOR ASSY	1		
7	0770122	STATOR	1		
8	0770121	MOTOR CASING	1	SUS	
9	0770130	UPPER COVER	1		
10	0770127	MOTOR BOTTOM COVER	1	ABS	
11	0770131	UPPER COVER SCREW SLEEVE	4	SUS	
12	0770137	SCREW	3	M5*55	
13	0770136	SCREW	3	M5*20	
14	0770134	GASKET	1	NBR	
15	0770129	CAPACITOR	1	5UF-450V	
16	0770020	EARTH	1	155MM	
17	0770139	SCREW	1	M4*6	
18	0770033	WASHER	1	M4	
19	0770132	GROMMET	1	NBR	
20	0770126	WAVE WASHER	1	6200	
21	0770128	BEARING HOUSING	1	AL	
22	0770138	SCREW	3	M5*15	
23	0770135	ORING	1	NBR	
24	0770133	ORING	1	NBR	
25	0770007	PLUG	1	M6*8	
26	0770008	ORING	1	NBR	
27	0778017	CABLE ASSY	1	10M	
28	0770081	GASKET	1	SILICONE	
29	0770153	SCREW	2	M5*20	
30	0770031	WASHER	2		

◆ Bare engine can not be supplied



DWG No.077850501 MODELE : PKJ-150 FORM : PKJ-150-BAB-0

No.	PARTS CODE	PARTS NAME	QTY	MATERIAL/SIZE	REMARKS
31	0770148	HANDLE	1	NYLON	
32	0770133	ORING	1	NBR	
33	0778018	MECHANICAL SEAL ASSY	1		
34	0770145	COVER OF OIL CHAMBER	1		
35	0770144	PUMP HOUSING	1	ABS	
36	0770152	SCREW	4	M5*25	
37	0770150	ORING	1	NBR	
38	0770146	LIP SEAL	1	NBR	
39	0770147	SHAFT SLEEVE	1	SUS	
40	0770143	IMPELLER	1	PC+GF	
41	0770142	NUT	1		
42	0770007	PLUG	1	M6*8	
43	0770008	ORING	2	NBR	
44	0770310	DISCHARGE OUTLET	1	1 1/4" PP	
45	0770149	FLANGE	1	1 1/4" PP+FG	
46	0770096	SCREW	2	M8*40 SUS	
47	0770029	WASHER	2	M8 SUS	
48	0770095	NUT	2	M8 SUS	
49	0770151	ORING	1	NBR	
50	0770284	PKJ-150 NAME PLATE LABEL	1	PET	
51	0770306	CAUTION LABEL	1		
52	0770302	LOGO LABEL	1	PET	
	0770061	PKJ-150 PACKING CASE	1		
	0778061	MANUAL ASSY	1		
	0770053	MANUAL	1		
	0770056	PKJ SPECIFICATION	1		
	0770054	DECLARATION	1		
	0770307	OIL	0.110	SHELL VITREA OIL ISOVG32 1000CC	

◆ Bare engine can not be supplied