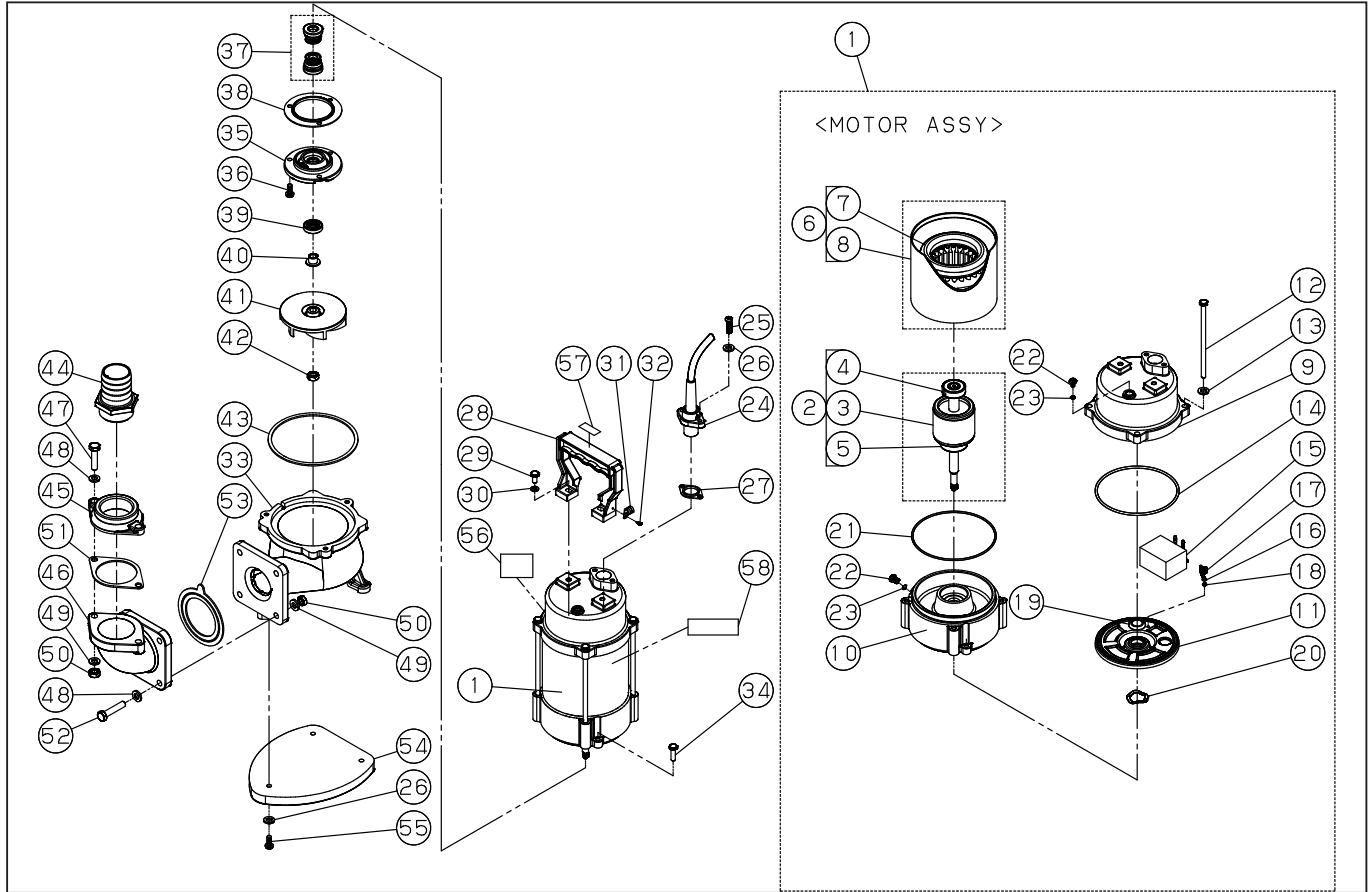


DWG No.077850601 MODELE : PKJ-250 FORM : PKJ-250-BAB-0

No.	PARTS CODE	PARTS NAME	QTY	MATERIAL/SIZE	REMARKS
1	0778019	MOTOR ASSY	1		
2	0778021	ROTOR ASSY	1		
3	0770157	ROTOR	1	58*40	
4	0770123	BEARING	1	6201LLB	
5	0770156	BEARING	1	6301LLB	
6	0778020	STATOR ASSY	1		
7	0770155	STATOR	1		
8	0770154	MOTOR CASING	1	SUS	
9	0770162	UPPER COVER	1	FC	
10	0770159	MOTOR BOTTOM COVER	1	FC	
11	0770160	MOTOR UPPER COVER	1	ST	
12	0770165	SCREW	4	M6*123	
13	0770088	WASHER	4	M6	
14	0770164	ORING	1	φ 110*3 NBR	
15	0770161	CAPACITOR	1	7.5UF-450V	
16	0770020	EARTH	1	155MM	
17	0770139	SCREW	1	M4*6	
18	0770033	WASHER	1	M4	
19	0770022	GROMMET	1	NBR	
20	0770158	WAVE WASHER	1	6201	
21	0770163	ORING	1	NBR	
22	0770007	PLUG	2	M6*8	
23	0770008	ORING	2	NBR	
24	0778017	CABLE ASSY	1	10M	
25	0770030	SCREW	2	M5*18	
26	0770031	WASHER	5	M5	
27	0770081	GASKET	1	SILICONE	
28	0770171	HANDLE	1	NYLON	
29	0770179	SCREW	2	M6*20	
30	0770180	WASHER	2	M6	

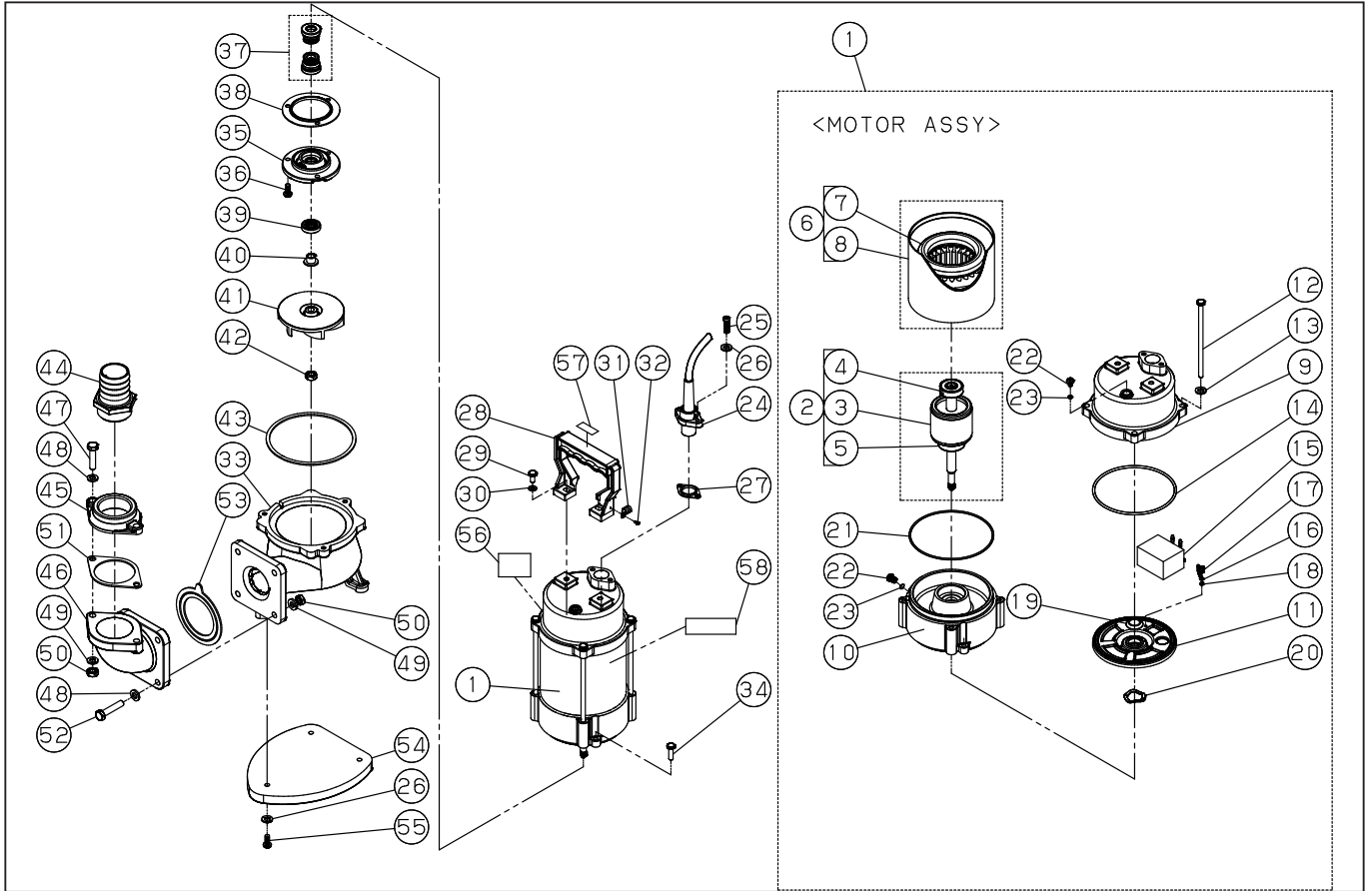
◆ Bare engine can not be supplied



DWG No.077850601 MODELE : PKJ-250 FORM : PKJ-250-BAB-0

No.	PARTS CODE	PARTS NAME	QTY	MATERIAL/SIZE	REMARKS
31	0770308	CABLE CLAMPS	1	NYLON	
32	0770178	SCREW	1	M5*12	
33	0770168	PUMP HOUSING	1	FC	
34	0770177	SCREW	3	M5*20	
35	0770169	COVER OF OIL CHAMBER	1	FC	
36	0770093	SCREW	3	M5*12	
37	0778018	MECHANICAL SEAL ASSY	1	φ 12 C/C,S/C	
38	0770175	GASKET	1	NBR	
39	0770170	LIP SEAL	1	NBR	
40	0770147	SHAFT SLEEVE	1	SUS	
41	0770167	IMPELLER	1	PC+GF	
42	0770142	NUT	1	M8 SELF LOCKING NUT +NYLON	
43	0770174	GASKET	1	NBR	
44	0770172	DISCHARGE OUTLET	1	1 1/2" PP	
45	0770173	FLANGE	1	1 1/2" PS FC	
46	0770077	ELBOW	1	2" FC	
47	0770181	SCREW	2	M8*35	
48	0770090	WASHER	6	M8	
49	0770029	WASHER	6	M8	
50	0770095	NUT	6	M8	
51	0770083	GASKET	1	2" NBR	
52	0770096	SCREW	4	M8*40	
53	0770082	GASKET	1	2" NBR	
54	0770166	BOTTOM PLATE	1	FC	
55	0770176	SCREW	3	M5*18	
56	0770285	PKJ-250 NAME PLATE LABEL	1	PET	
57	0770306	CAUTION LABEL	1	POLYESTER	
58	0770302	LOGO LABEL	1	PET	
	0770062	PKJ-250 PACKING CASE	1		
	0778061	MANUAL ASSY	1		

◆ Bare engine can not be supplied



DWG No.077850601 MODELE : PKJ-250 FORM : PKJ-250-BAB-0

No.	PARTS CODE	PARTS NAME	QTY	MATERIAL/SIZE	REMARKS
	0770053	MANUAL	1		
	0770056	PKJ SPECIFICATION	1		
	0770054	DECLARATION	1		
	0770307	OIL	0.160	SHELL VITREA OIL ISOVG32 1000CC	

◆ Bare engine can not be supplied