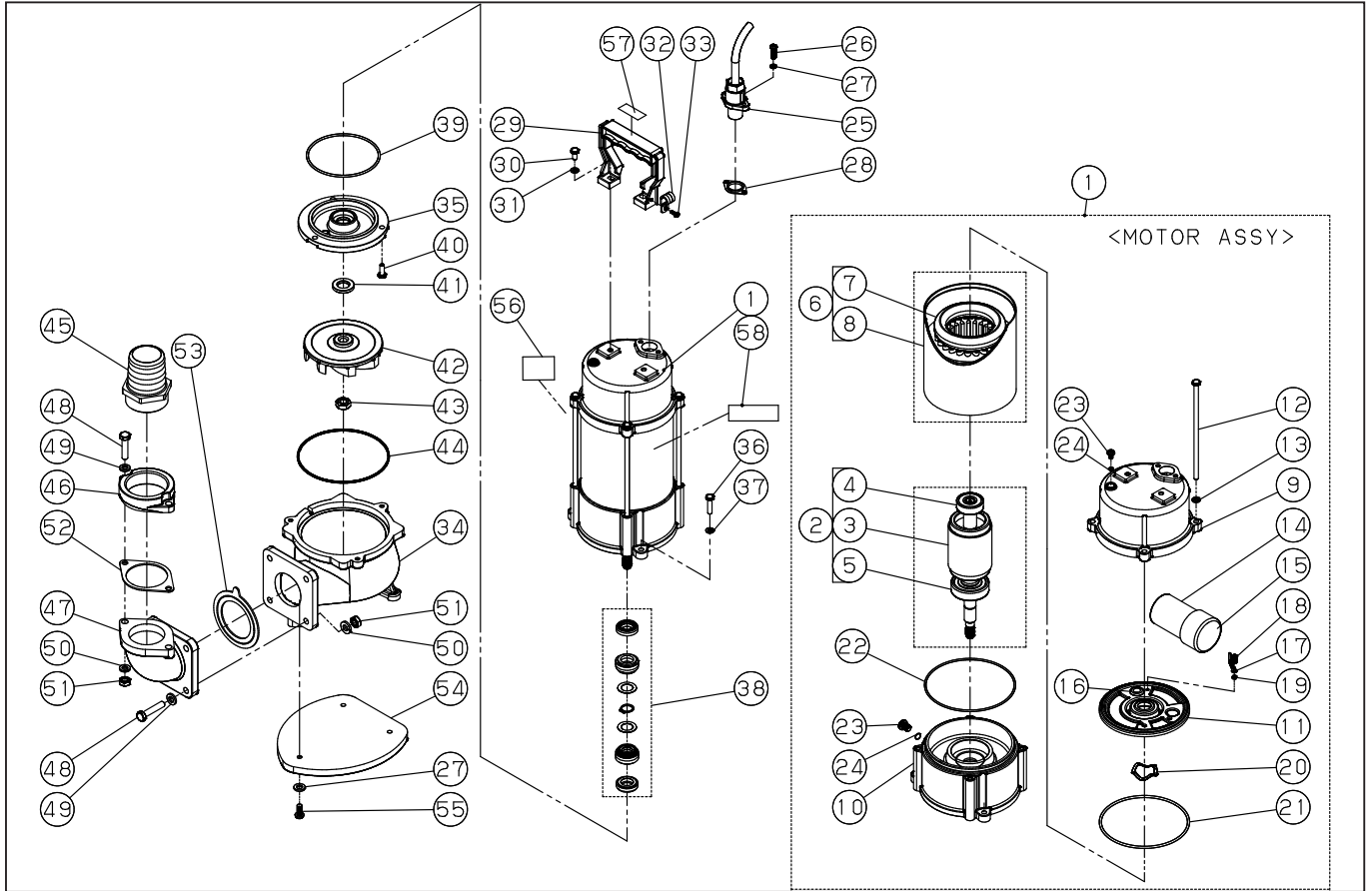


DWG No.077850801 MODELE : PKJ-750 FORM : PKJ-750-BAB-0

No.	PARTS CODE	PARTS NAME	QTY	MATERIAL/SIZE	REMARKS
1	0778025	MOTOR ASSY	1		
2	0778026	ROTOR ASSY	1		
3	0770189	ROTOR	1	SUS	
4	0770156	BEARING	1	6301LLB	
5	0770188	BEARING	1	6304LLB	
6	0778027	STATOR ASSY	1		
7	0770191	STATOR	1		
8	0770190	MOTOR CASING	1	SUS	
9	0770196	UPPER COVER	1	FC	
10	0770193	MOTOR BOTTOM COVER	1	FC	
11	0770194	MOTOR UPPER COVER	1	ST	
12	0770199	SCREW	4	M6*160	
13	0770088	WASHER	4	M6	
14	0770195	CAPACITOR	1	15UF-450V	
15	0770023	SPACER	1		
16	0770022	GROMMET	1	NBR	
17	0770020	EARTH	1	155MM	
18	0770139	SCREW	1	M4*6	
19	0770033	WASHER	1	M4ST	
20	0770192	WAVE WASHER	1	6301	
21	0770198	ORING	1	NBR	
22	0770197	ORING	1	NBR	
23	0770007	PLUG	2	M6*8	
24	0770008	ORING	2	NBR	
25	0778004	CABLE ASSY	1	10M	
26	0770030	SCREW	2	M5*18	
27	0770031	WASHER	5	M5	
28	0770081	GASKET	1	SILICONE	
29	0770171	HANDLE	1	NYLON	
30	0770179	SCREW	2	M6*20	

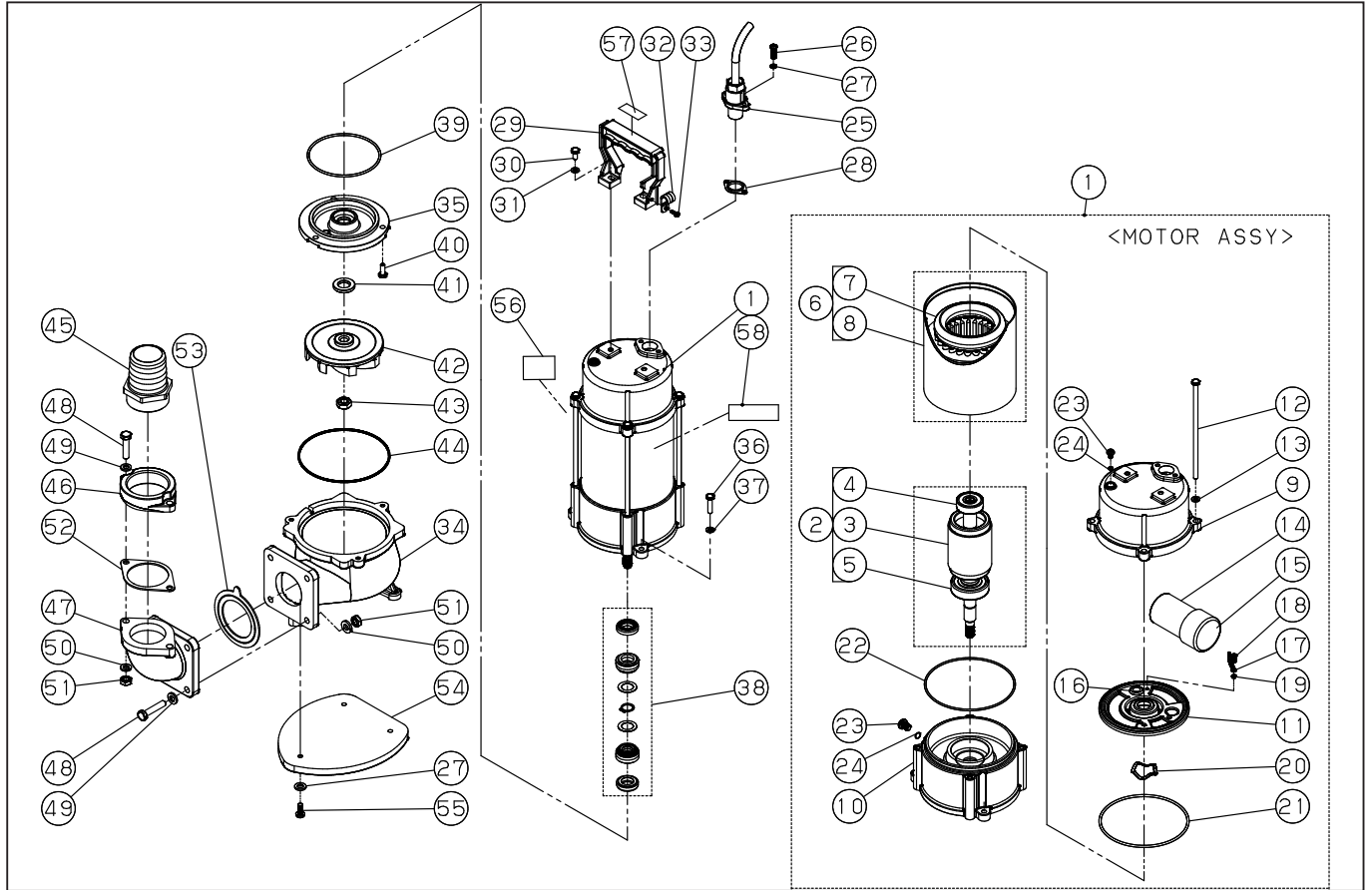
◆ Bare engine can not be supplied



DWG No.077850801 MODELE : PKJ-750 FORM : PKJ-750-BAB-0

No.	PARTS CODE	PARTS NAME	QTY	MATERIAL/SIZE	REMARKS
31	0770211	WASHER	2	M6	
32	0770308	CABLE CLAMPS	1	NYLON	
33	0770093	SCREW	1	M5*12	
34	0770206	PUMP HOUSING	1	FC	
35	0770301	COVER OF OIL CHAMBER	1	FC	
36	0770210	SCREW	3	M6*25	
37	0770088	WASHER	3	M6	
38	0778028	MECHANICAL SEAL ASSY	1	φ 16 C/C,S/C	
39	0770133	ORING	1	NBR	
40	0770025	SCREW	3	M6*12	
41	0770207	LIP SEAL	1	NBR	
42	0770205	IMPELLER	1	FCD	
43	0770204	NUT	1	M16	
44	0770209	ORING	1	NBR	
45	0770186	DISCHARGE OUTLET	1	2" PP	
46	0770208	FLANGE	1	2" PTFE	
47	0770077	ELBOW	1	2"FC	
48	0770096	SCREW	6	M8*40	
49	0770090	WASHER	6	M8	
50	0770029	WASHER	6	M8	
51	0770095	NUT	6	M8	
52	0770083	GASKET	1	2" NBR	
53	0770082	GASKET	1	2" NBR	
54	0770166	BOTTOM PLATE	1	FC	
55	0770176	SCREW	3	M5*18	
56	0770287	PKJ-750 NAME PLATE LABEL	1	PET	
57	0770306	CAUTION LABEL	1	POLYESTER	
58	0770303	LOGO LABEL	1	PET	
	0770064	PKJ-750 PACKING CASE	1		
	0778061	MANUAL ASSY	1		

◆ Bare engine can not be supplied



DWG No.077850801 MODELE : PKJ-750 FORM : PKJ-750-BAB-0

No.	PARTS CODE	PARTS NAME	QTY	MATERIAL/SIZE	REMARKS
	0770053	MANUAL	1		
	0770056	PKJ SPECIFICATION	1		
	0770054	DECLARATION	1		
	0770307	OIL	0.410	SHELL VITREA OIL ISOVG32 1000CC	

◆ Bare engine can not be supplied