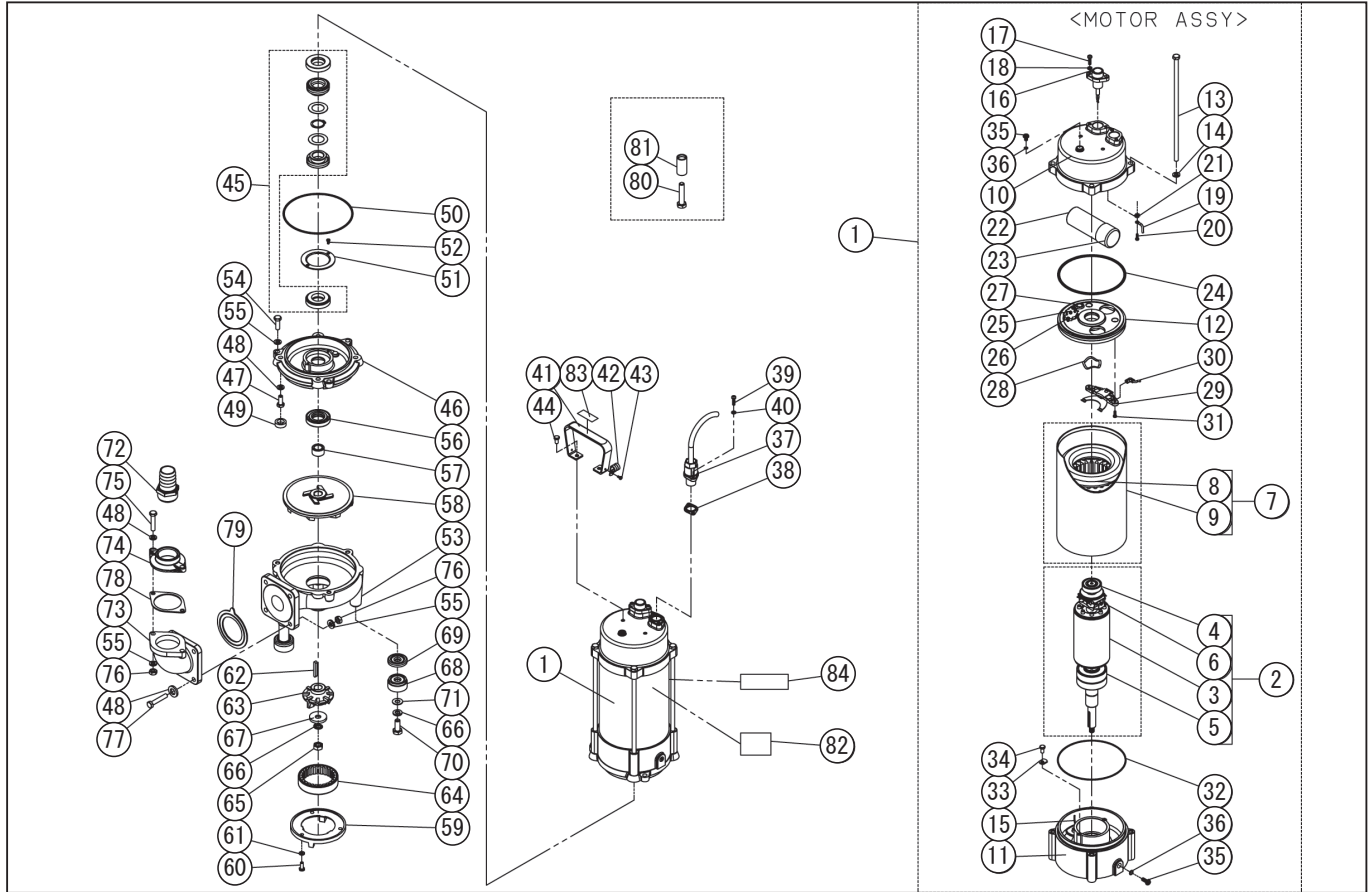


DWG No.077851001 MODELE : PKG-750 FORM : PKG-750-BAB-0

No.	PARTS CODE	PARTS NAME	QTY	MATERIAL/SIZE	REMARKS
1	0778001	MOTOR ASSY	1		
2	0778002	ROTOR ASSY	1		
3	0770002	ROTOR	1	SUS	
4	0770004	BEARING	1	6203LLB	
5	0770001	BEARING	1	6304LLB+DB	
6	0770003	GOVERNOR SWITCH	1		
7	0778003	STATOR ASSY	1		
8	0770006	STATOR	1		
9	0770005	MOTOR CASING	1	SUS	
10	0770016	UPPER COVER	1	FC	
11	0770012	MOTOR BOTTOM COVER	1	FC	
12	0770013	MOTOR UPPER COVER	1	FC	
13	0770028	SCREW	4	M8X225	
14	0770029	WASHER	4	M8	
15	0770019	PROBE & STAND	1		
16	0770017	SENSOR GLAND	1		
17	0770030	SCREW	2	M5X18	
18	0770031	WASHER	2	M5	
19	0770020	EARTH	1	155MM	
20	0770032	SCREW	1	M4X6	
21	0770033	WASHER	1	M4	
22	0770015	CAPACITOR	1	80UFD-400V	
23	0770023	SPACER	1		
24	0770024	ORING	1	NBR	
25	0770014	OVERLOAD PROTECTOR	1		
26	0770027	SCREW	2	M4X12	
27	0770022	GROMMET	1	NBR	
28	0770011	WAVE WASHER	1	6203	
29	0770010	CENTRIFUGAL	1		
30	0770018	FLEX	1	175MM	

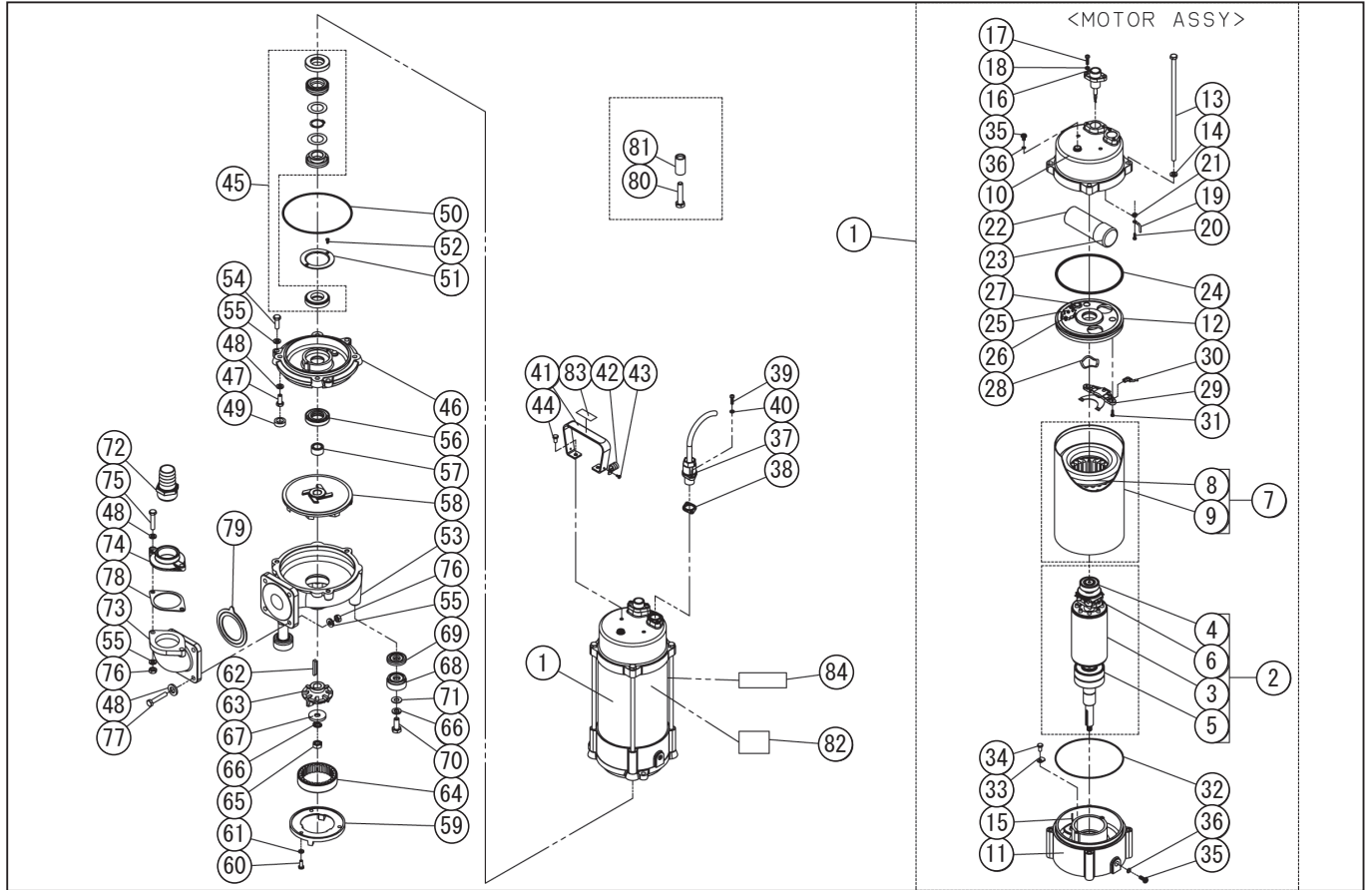
◆ Bare engine can not be supplied



DWG No.077851001 MODELE : PKG-750 FORM : PKG-750-BAB-0

No.	PARTS CODE	PARTS NAME	QTY	MATERIAL/SIZE	REMARKS
31	0770026	SCREW	2	M4X12	
32	0770021	ORING	1	NBR	
33	0770009	BEARING COVER	2	SUS	
34	0770025	SCREW	2	M6X12	
35	0770007	PLUG	2	M6X8	
36	0770008	ORING	2	NBR	
37	0778004	CABLE ASSY	1	10M	
38	0770081	GASKET	1	SILICONE	
39	0770030	SCREW	2	M5X18	
40	0770031	WASHER	2	M5	
41	0770309	HANDLE	1	SUS	
42	0770308	CABLE CLAMPS	1	NYLON	
43	0770093	SCREW	1	M5X12	
44	0770025	SCREW	2	M6X12	
45	0778005	MECHANICAL SEAL ASSY	1	φ 20 C/C,S/C	
46	0770049	COVER OF OIL CHAMBER	1	FC	
47	0770089	SCREW	4	M8X20	
48	0770090	WASHER	10	M8	
49	0770080	GASKET	4	NBR	
50	0770079	ORING	1	NBR	
51	0770052	SEAL COVER	1	SUS	
52	0770091	SCREW	2	M4X8	
53	0770048	PUMP HOUSING	1	FCD	
54	0770092	SCREW	3	M8X25	
55	0770029	WASHER	9	M8	
56	0770050	LIP SEAL	1	NBR	
57	0770051	SHAFT SLEEVE	1	SUS	
58	0770043	IMPELLER	1	FCD	
59	0770046	SHREDDING RING COVER	1	FCD	
60	0770087	SCREW	1	M6X15	

◆ Bare engine can not be supplied



DWG No.077851001 MODELE : PKG-750 FORM : PKG-750-BAB-0

No.	PARTS CODE	PARTS NAME	QTY	MATERIAL/SIZE	REMARKS
61	0770088	WASHER	3	M6	
62	0770047	KEY	1	SUS	
63	0770044	GRINDER IMPELLER	1	HICR	
64	0770045	SHREDDING RING	1	HICR	
65	0770041	NUT	1	M10	
66	0770042	WASHER	4	M10	
67	0770305	WASHER	1	SUS	
68	0770039	BOTTOM PLATE COVER	3	SUS	
69	0770038	CUSHION	3	NBR	
70	0770084	SCREW	3	M10X25	
71	0770085	WASHER	3	M10	
72	0770310	DISCHARGE OUTLET	1	1 1/4" PP	
73	0770077	ELBOW	1	2" FC	
74	0770078	FLANGE	1	1 1/4" PT FC	
75	0770096	SCREW	2	M8X40	
76	0770095	NUT	6	M8	
77	0770094	SCREW	4	M8X45	
78	0770083	GASKET	1	2" NBR	
79	0770082	GASKET	1	2" NBR	
80	0770040	CANNULA	3	SUS	
81	0770086	SCREW	3	M10X60	
82	0770293	PKG-750 NAME PLATE LABEL	1	PET	
83	0770306	CAUTION LABEL	1	POLYESTER	
	0770070	PKG-750 PACKING CASE	1		
	0778062	MANUAL ASSY	1		
	0770053	MANUAL	1		
	0770058	PKG SPECIFICATION	1		
	0770054	DECLARATION	1		
84	0770304	LOGO LABEL	1	PET	
	0770307	OIL	0.425	SHELL VITREA OIL ISOVG32 1000CC	

◆ Bare engine can not be supplied